

**FOR LEASE**  
Reasonably Priced Office Space



**14,000 Sq Ft Available**  
4224 Port Drive, Lee's Summit, Missouri



Estimated Population  
**95,623**

Average Household Income  
**\$83,588**

Five Mile Radius

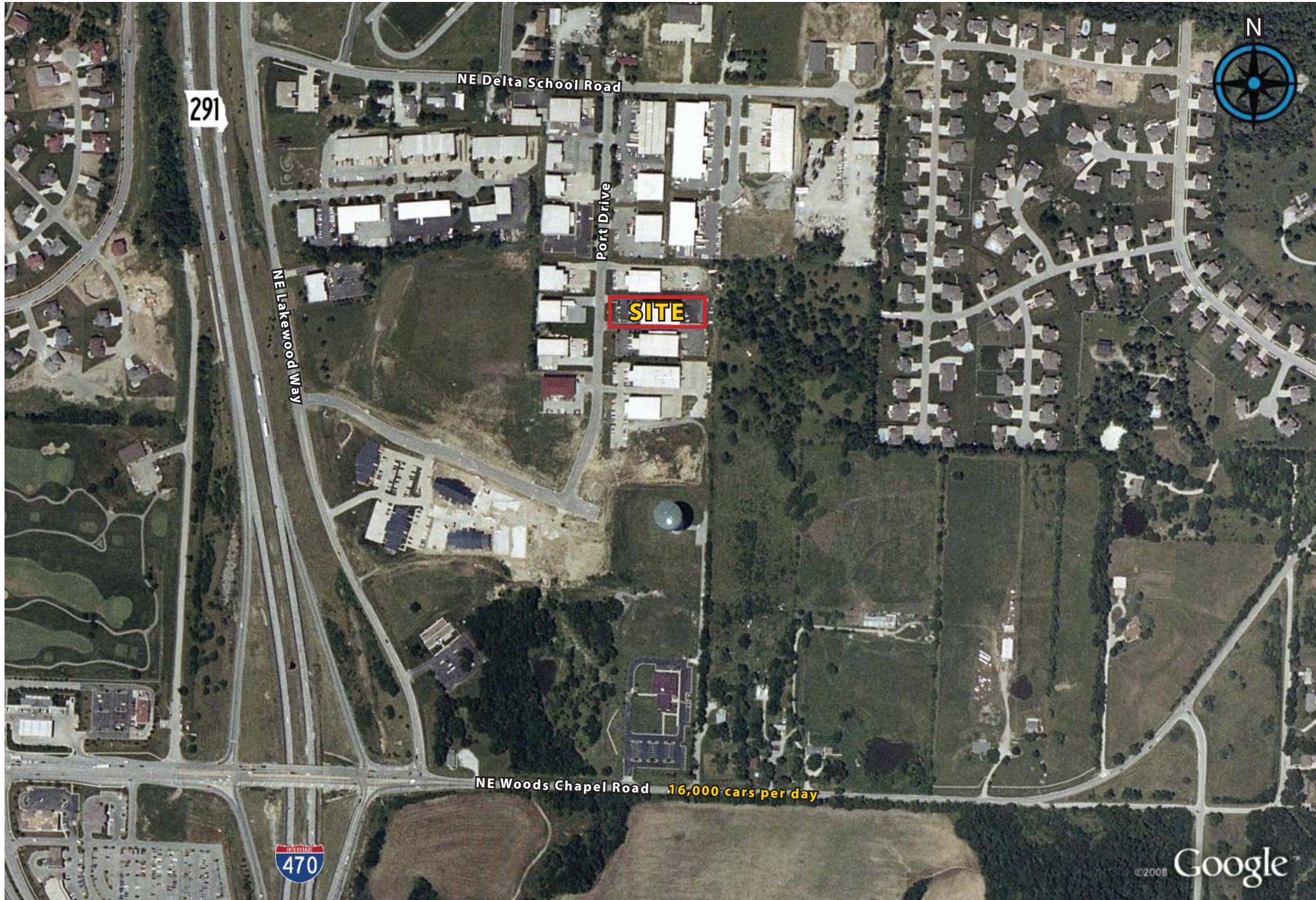
- Great location
- Easy access off 291 Highway
- \$5.00 / sq ft

BLOCK & COMPANY, INC., Realtors 816.753.6000  
In the Skelly Building on the Country Club Plaza  
605 West 47th Street, Suite 200, Kansas City, Missouri 64112

For Information Contact:

**William Glasgow**  
816.412.7210  
wglasgow@blockandco.com

# 4224 Port Drive, Kansas City, Missouri





©2008, SITES USA Inc., Chandler, AZ (480) 491-1112. All Rights Reserved.

**4224 NE Port Drive**  
**Lee's Summit, Missouri**

November 2008

This map was produced using data from private and government sources deemed to be reliable. The information herein is provided without representation or warranty.

# SUMMARY DEMOGRAPHIC PROFILE

- Census, 2011 Estimates & 2016 Projections

Calculated using Proportional Block Groups

Lat/Lon: 38.988036/-94.352117

January 2013

RS1

4224 Port Drive Lees Summit, Missouri		1.00 mi radius	3.00 mi radius	5.00 mi radius
<b>POPULATION</b>	2011 Estimated Population	2,947	20,612	95,623
	2016 Projected Population	2,992	20,518	92,240
	Census Population	2,222	15,445	84,688
	Census Population	1,025	10,142	67,908
	Historical Annual Growth to 2011	8.9%	4.9%	1.9%
	Projected Annual Growth 2011 to 2016	0.3%	-0.1%	-0.7%
	2011 Median Age	33.6	34.0	34.9
<b>HOUSEHOLDS</b>	2011 Estimated Households	1,138	8,021	38,080
	2016 Projected Households	1,232	8,521	39,281
	Census Households	804	5,666	31,776
	Census Households	362	3,648	24,504
	Historical Annual Growth to 2011	10.2%	5.7%	2.6%
	Projected Annual Growth 2011 to 2016	1.7%	1.2%	0.6%
<b>POPULATION BY RACE</b>	2011 Estimated White	85.0%	83.4%	84.1%
	2011 Estimated Black or African American	10.0%	11.0%	9.6%
	2011 Estimated Asian & Pacific Islander	2.5%	2.2%	1.7%
	2011 Estimated American Indian & Native Alaskan	0.1%	0.3%	0.4%
	2011 Estimated Other Races	2.4%	3.2%	4.2%
	2011 Estimated Hispanic	2.3%	3.4%	4.9%
<b>INCOME</b>	2011 Estimated Average Household Income	\$ 157,045	\$ 110,832	\$ 83,588
	2011 Estimated Median Household Income	\$ 113,964	\$ 90,516	\$ 72,088
	2011 Estimated Per Capita Income	\$ 60,774	\$ 43,485	\$ 33,542
<b>EDUCATION (AGE 25+)</b>	2011 Elementary	0.5%	1.1%	1.5%
	2011 Some High School	2.0%	2.2%	4.2%
	2011 High School Graduate	24.9%	26.3%	28.5%
	2011 Some College	26.5%	23.3%	23.9%
	2011 Associates Degree Only	5.7%	5.7%	8.0%
	2011 Bachelors Degree Only	20.7%	23.0%	21.8%
	2011 Graduate Degree	19.7%	18.4%	12.1%
<b>BUSINESS</b>	Number of Businesses	134	670	3,810
	Total Number of Employees	1,573	7,928	47,638
	Employee Population per Business	11.7	11.8	12.5
	Residential Population per Business	22.0	30.8	25.1

This report was produced using data from private and government sources deemed to be reliable. The information herein is provided without representation or warranty.